



Aluminium Cladding System



'The countries of export; İhracat yapılan ülkeler'

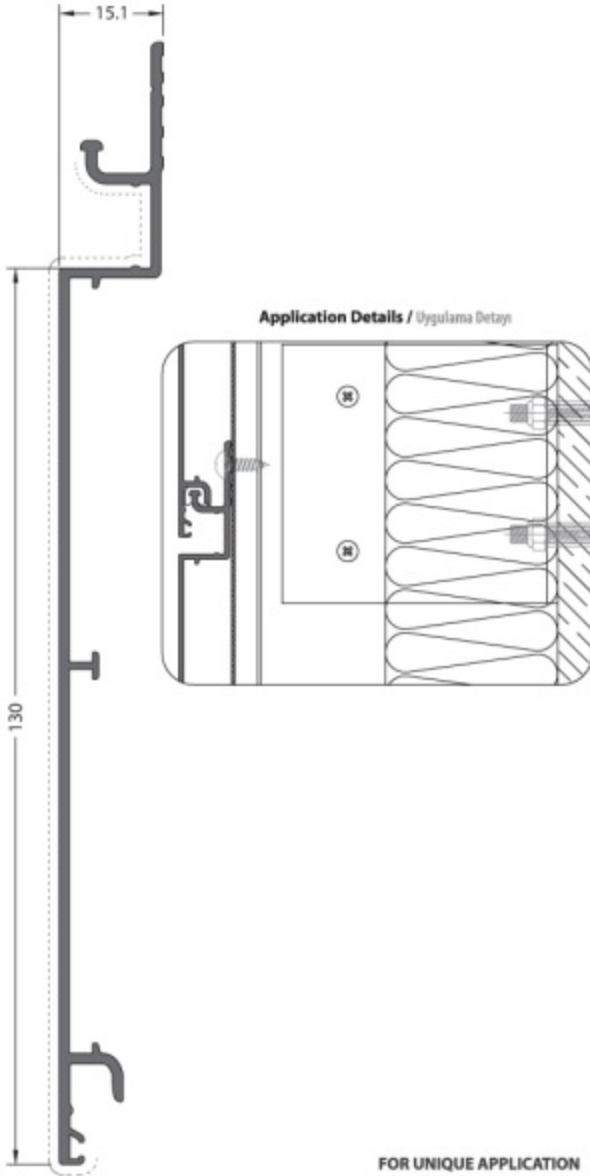


countries of export; İhracat yapılan ülkeler.

- Switzerland / İsviçre
- Germany / Almanya
- England UK / İngiltere
- Austria / Avusturya
- Greece / Yunanistan
- Cyprus / Kıbrıs
- Bulgaria / Bulgaristan
- Libya / Libya
- Ghana / Gana
- Russian Federation / Rusya Federasyonu
- Ukraine / Ukrayna
- Lithuania / Litvanya
- Moldavia / Moldova
- Serbia / Sırbistan
- Montenegro / Kosova
- Hungary / Macaristan
- Iran / İran
- Iraq / Irak
- Armenia / Ermenistan
- Albania / Arnavutluk
- Georgia / Gürcistan
- Ethiopia / Etiyopya
- Croatia / Hırvatistan
- Algeria / Cezayir
- Netherlands / Hollanda
- France / Fransa
- Belgium / Belçika
- Norway / Norveç
- Italy / İtalya
- Sweden / İsveç
- Poland / Polonya
- Czech Republic / Çek Cumhuriyeti
- Israel / İsrail
- Belarus / Beyaz Rusya
- Azerbaijan / Azerbaycan
- Turkmenistan / Türkmenistan
- Tajikistan / Tacikistan
- Kyrgyzstan / Kırgızistan
- Kazakhstan / Kazakistan
- Macedonia / Makedonya
- Romania / Romanya
- Qatar / Katar
- Tunisie / Tunus
- Uzbekistan / Özbekistan
- Bosnia Herzegovina / Bosna Hersek
- Madagascar / Madagaskar
- Gabon / Gabon
- Nigeria / Nijerya

0.00 +1.00 +2.00 +3.00 +4.00 +5.00 +6.00 +7.00 +8.00 +9.00 +10.00





CODE / KOD
29-0130-14

THEORETICAL WEIGHT kg/m
TEORİK AĞIRLIK kg/m
0.809

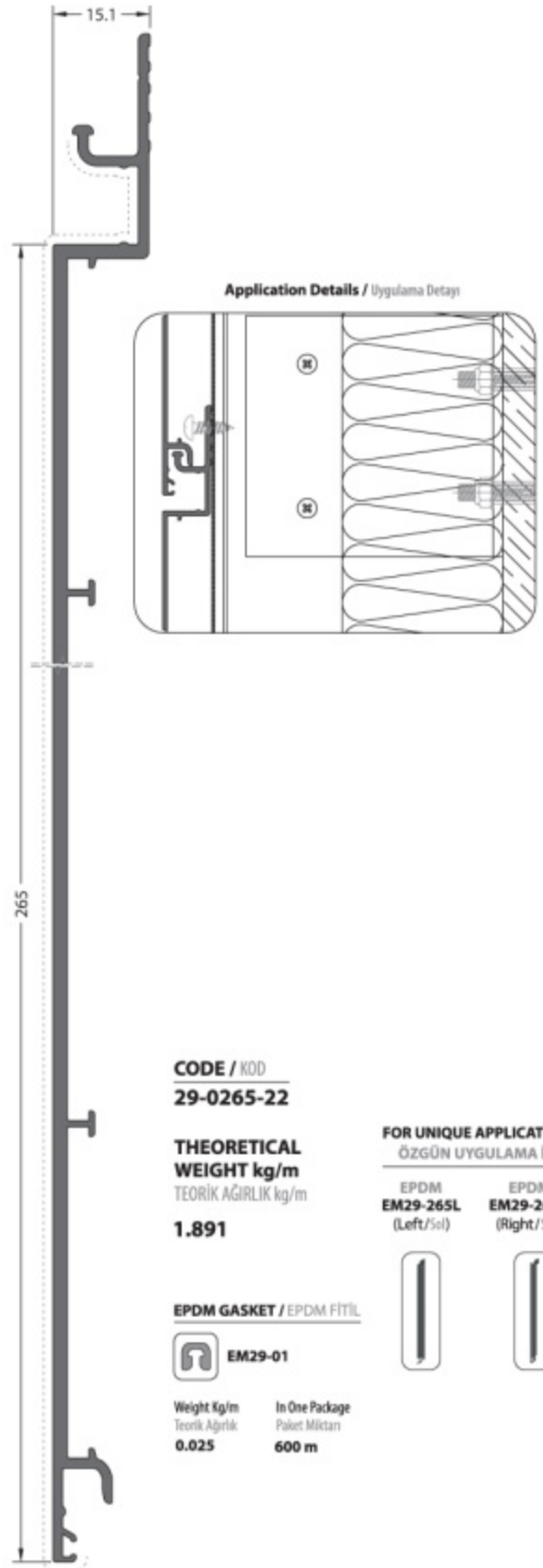
EPDM GASKET / EPDM FİTİL



EM29-01
Weight Kg/m In One Package
Teorik Ağırlık Paket Miktarı
0.025 600 m

FOR UNIQUE APPLICATION
ÖZGÜN UYGULAMA İÇİN

EM29-130L **EM29-130R**
EPDM EPDM
(Left/Sol) (Right/Sağ)



CODE / KOD
29-0265-22

THEORETICAL WEIGHT kg/m
TEORİK AĞIRLIK kg/m
1.891

EPDM GASKET / EPDM FİTİL

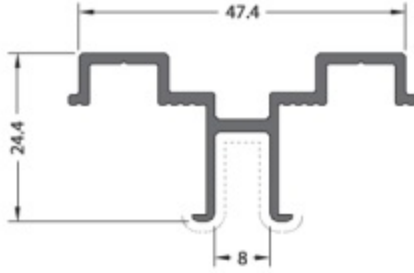


EM29-01
Weight Kg/m In One Package
Teorik Ağırlık Paket Miktarı
0.025 600 m

FOR UNIQUE APPLICATION
ÖZGÜN UYGULAMA İÇİN

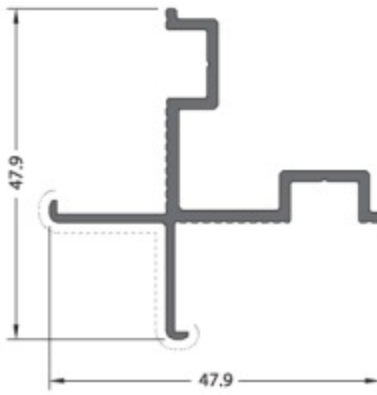
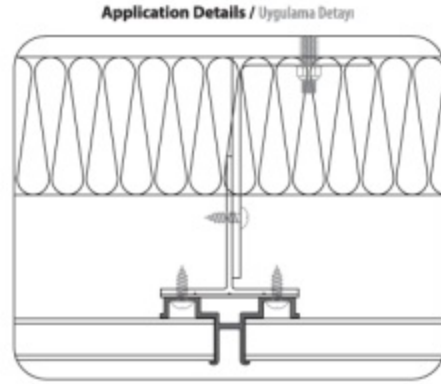
EM29-265L **EM29-265R**
EPDM EPDM
(Left/Sol) (Right/Sağ)





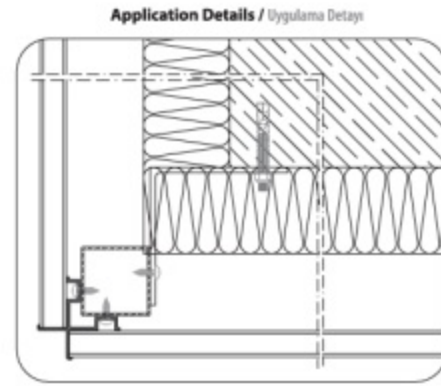
CODE / KOD
29-1001-00

THEORETICAL
WEIGHT kg/m
TEORİK AĞIRLIK kg/m
0.431



CODE / KOD
29-2001-00

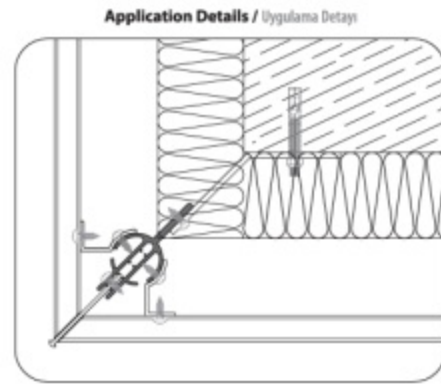
THEORETICAL
WEIGHT kg/m
TEORİK AĞIRLIK kg/m
0.473



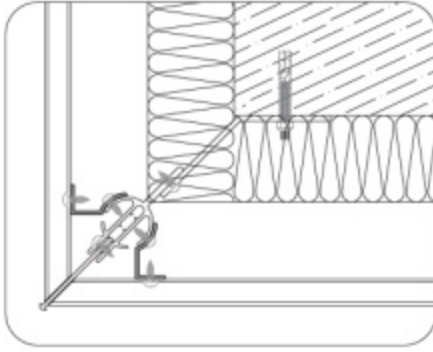
Mill Finish / Pres
No visible surface. / Görünen yüzeyi yoktur.

CODE / KOD
29-2011-00

THEORETICAL
WEIGHT kg/m
TEORİK AĞIRLIK kg/m
1.074



Application Details / Uygulama Detayı

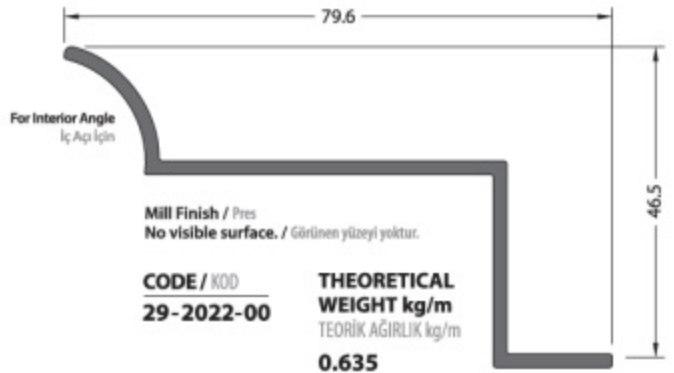
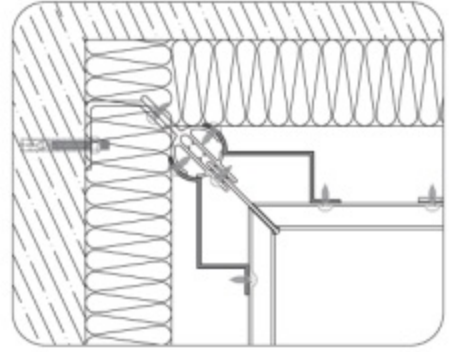


Mill Finish / Pres
No visible surface. / Görünen yüzeyi yoktur.

CODE / KOD
29-2021-00

THEORETICAL
WEIGHT kg/m
TEORİK AĞIRLIK kg/m
0.282

Application Details / Uygulama Detayı



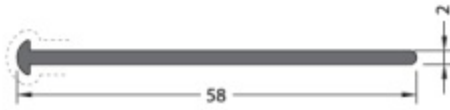
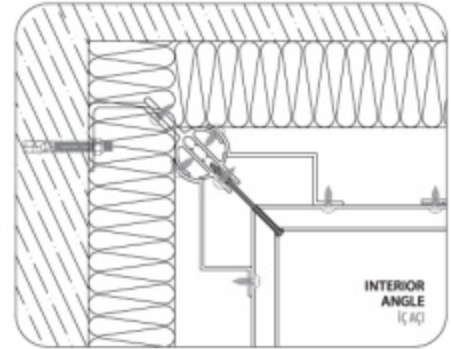
Mill Finish / Pres
No visible surface. / Görünen yüzeyi yoktur.

CODE / KOD
29-2022-00

THEORETICAL
WEIGHT kg/m
TEORİK AĞIRLIK kg/m
0.635

PROFILE CODE PROFİL KOD	INTERIOR ANGLE İÇ AÇI	EXTERIOR ANGLE DİŞ AÇI
29-2058-00	85° - 180°	85° - 180°
29-2083-00	60° - 85°	60° - 85°
29-2107-00	50° - 60°	53° - 60°

Application Details / Uygulama Detayı



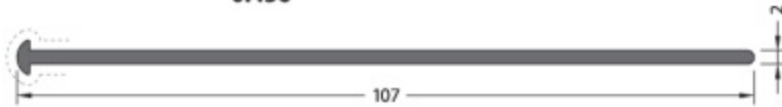
CODE / KOD
29-2058-00

THEORETICAL
WEIGHT kg/m
TEORİK AĞIRLIK kg/m
0.321



CODE / KOD
29-2083-00

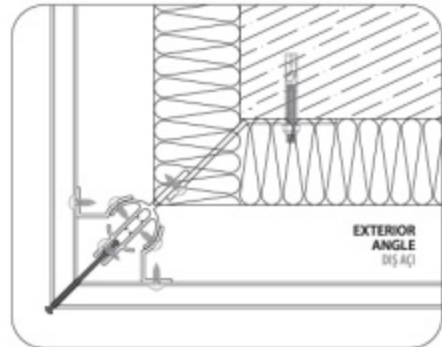
THEORETICAL
WEIGHT kg/m
TEORİK AĞIRLIK kg/m
0.456

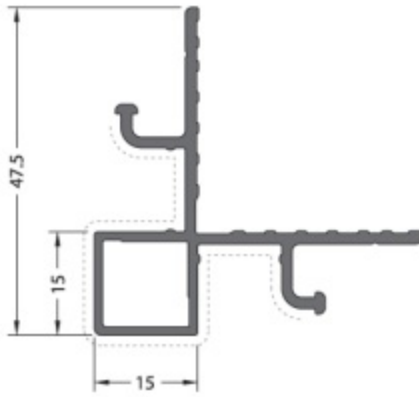


CODE / KOD
29-2107-00

THEORETICAL
WEIGHT kg/m
TEORİK AĞIRLIK kg/m
0.586

Application Details / Uygulama Detayı

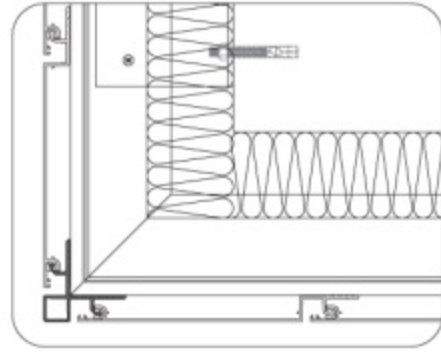




CODE / KOD
29-3001-00

THEORETICAL WEIGHT kg/m
TEORİK AĞIRLIK kg/m
0.606

Application Details / Uygulama Detayı

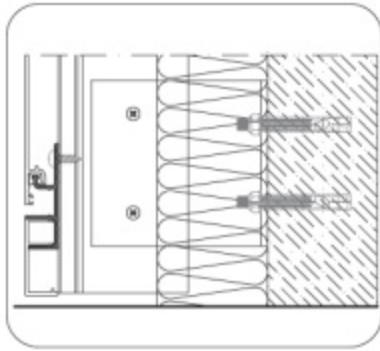


Application Details / Uygulama Detayı



CODE / KOD
29-3002-00

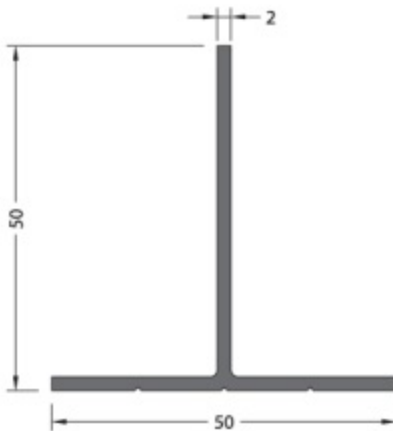
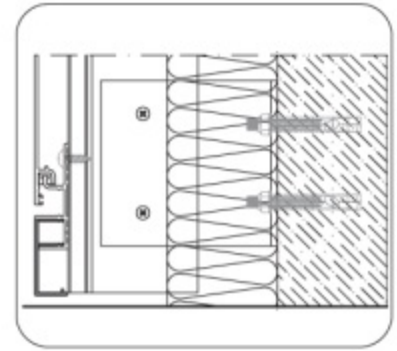
THEORETICAL WEIGHT kg/m
TEORİK AĞIRLIK kg/m
0.359



CODE / KOD
29-4001-00

THEORETICAL WEIGHT kg/m
TEORİK AĞIRLIK kg/m
0.252

Application Details / Uygulama Detayı

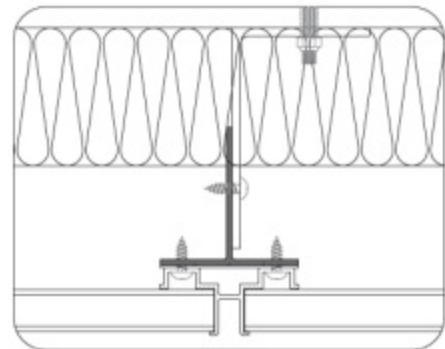


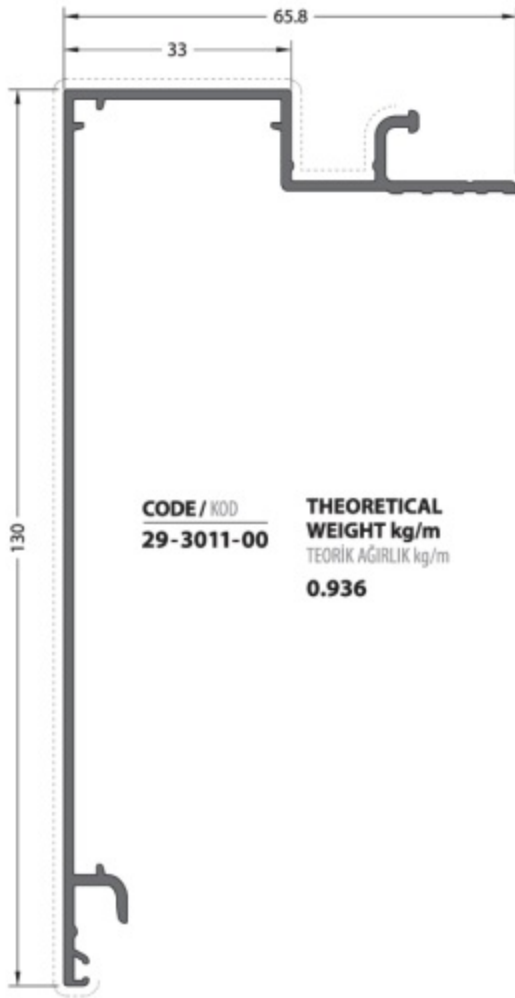
No visible surface.
Görünen yüzeyi yoktur.

CODE / KOD
16-104-020

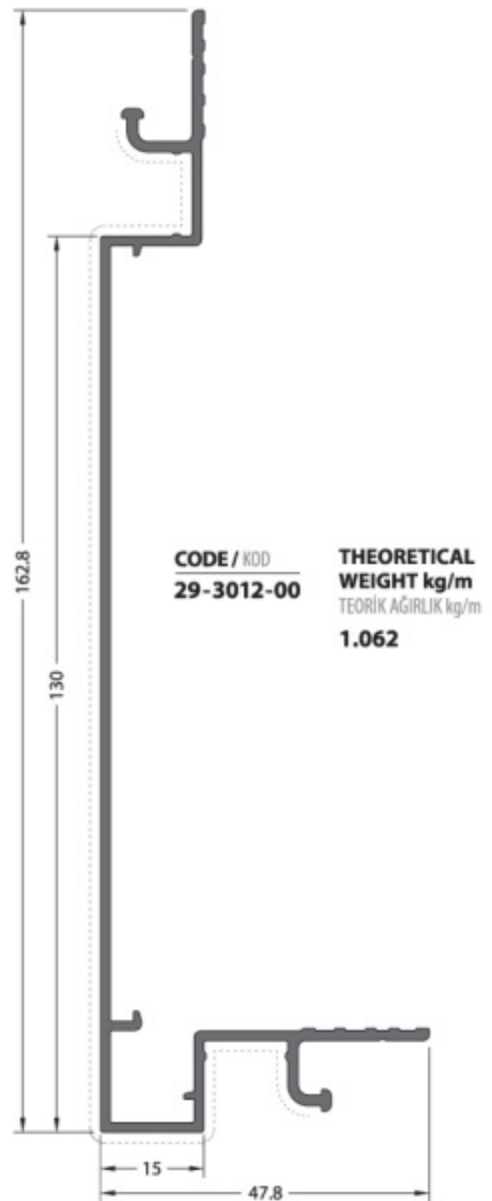
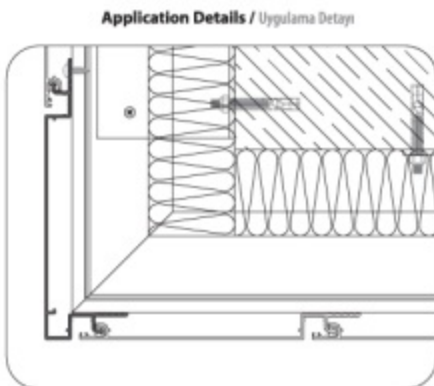
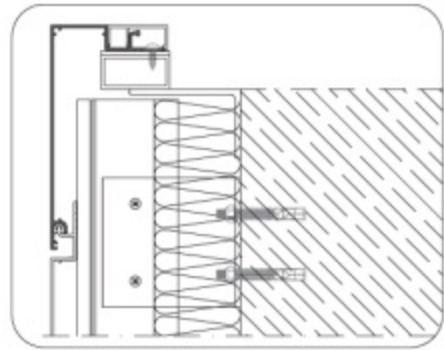
THEORETICAL WEIGHT kg/m
TEORİK AĞIRLIK kg/m
0.528

Application Details / Uygulama Detayı

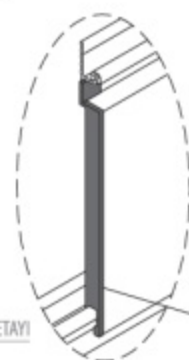
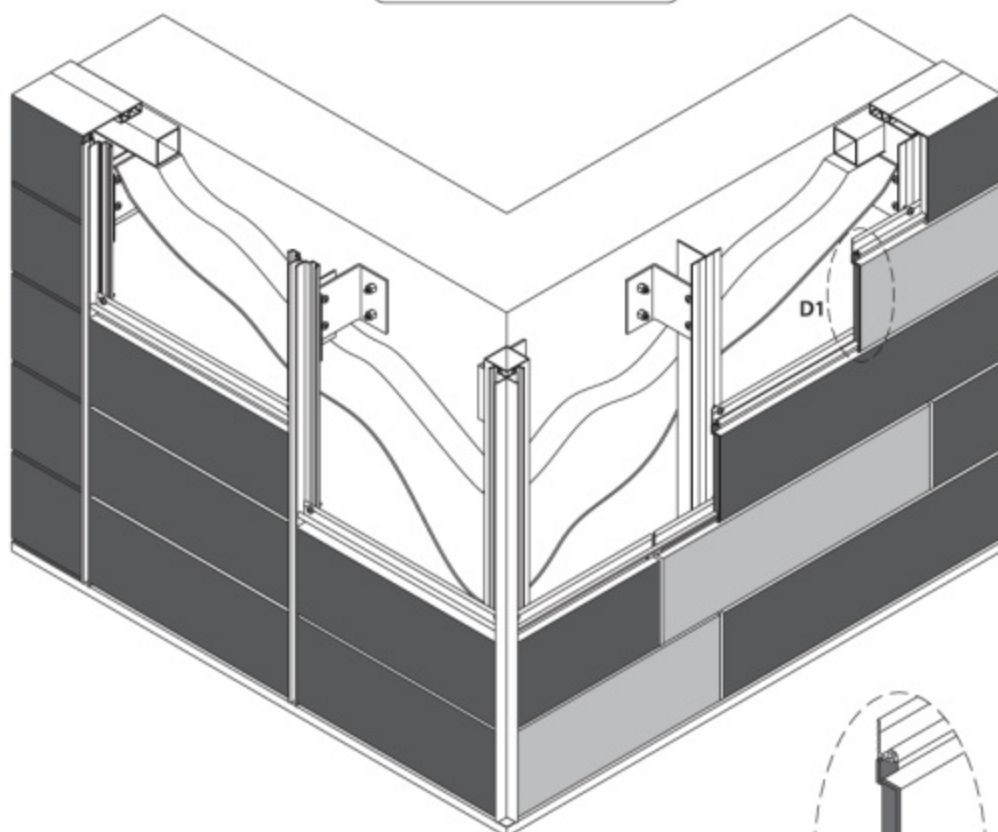




Application Details / Uygulama Detayı



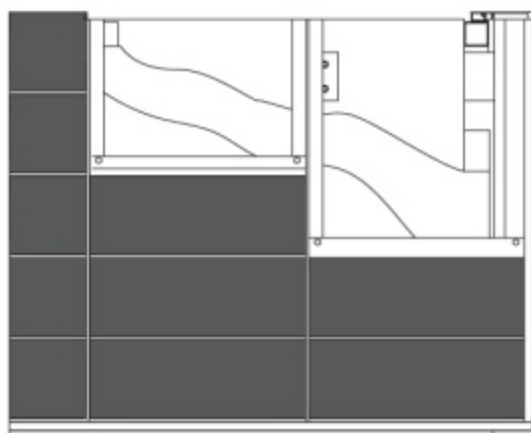
APPLICATIONS / UYGULAMALAR



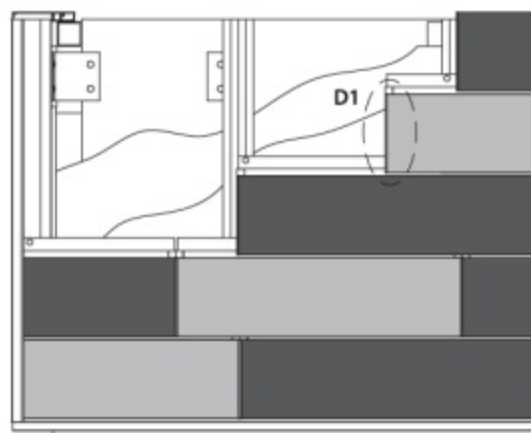
D1 DETAIL / D1 DETAYI

EPDM GASKET (Left / Right)
EPDM FİTİL (Sol / Sağ)

STANDARD APPLICATION / STANDART UYGULAMA



UNIQUE APPLICATION / ÖZGÜN UYGULAMA

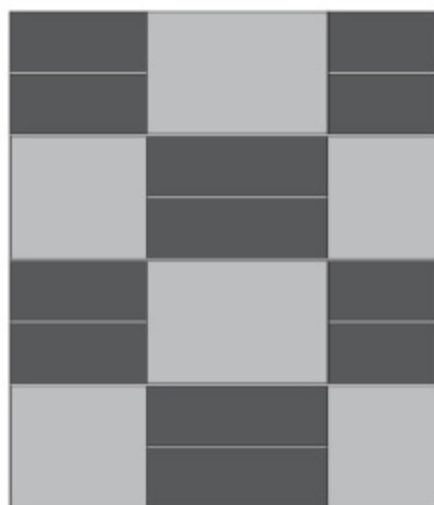
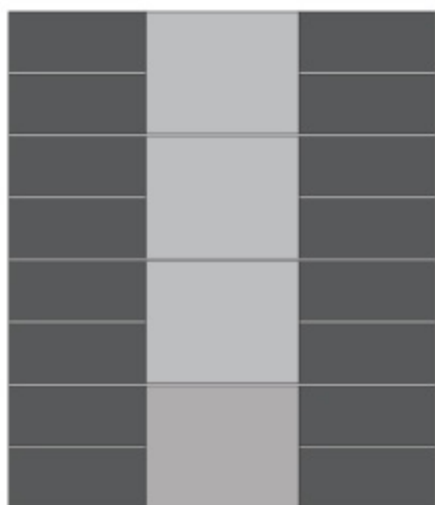
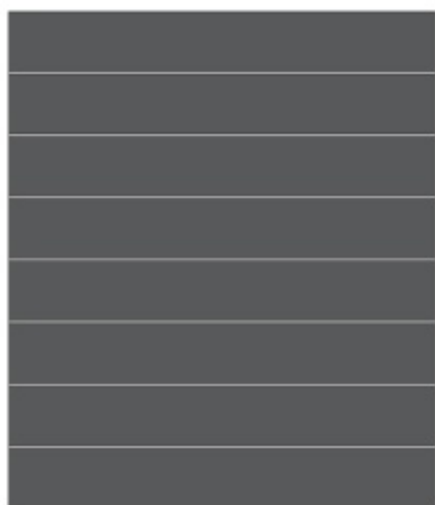


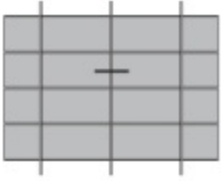


130 Lamella / Lamel

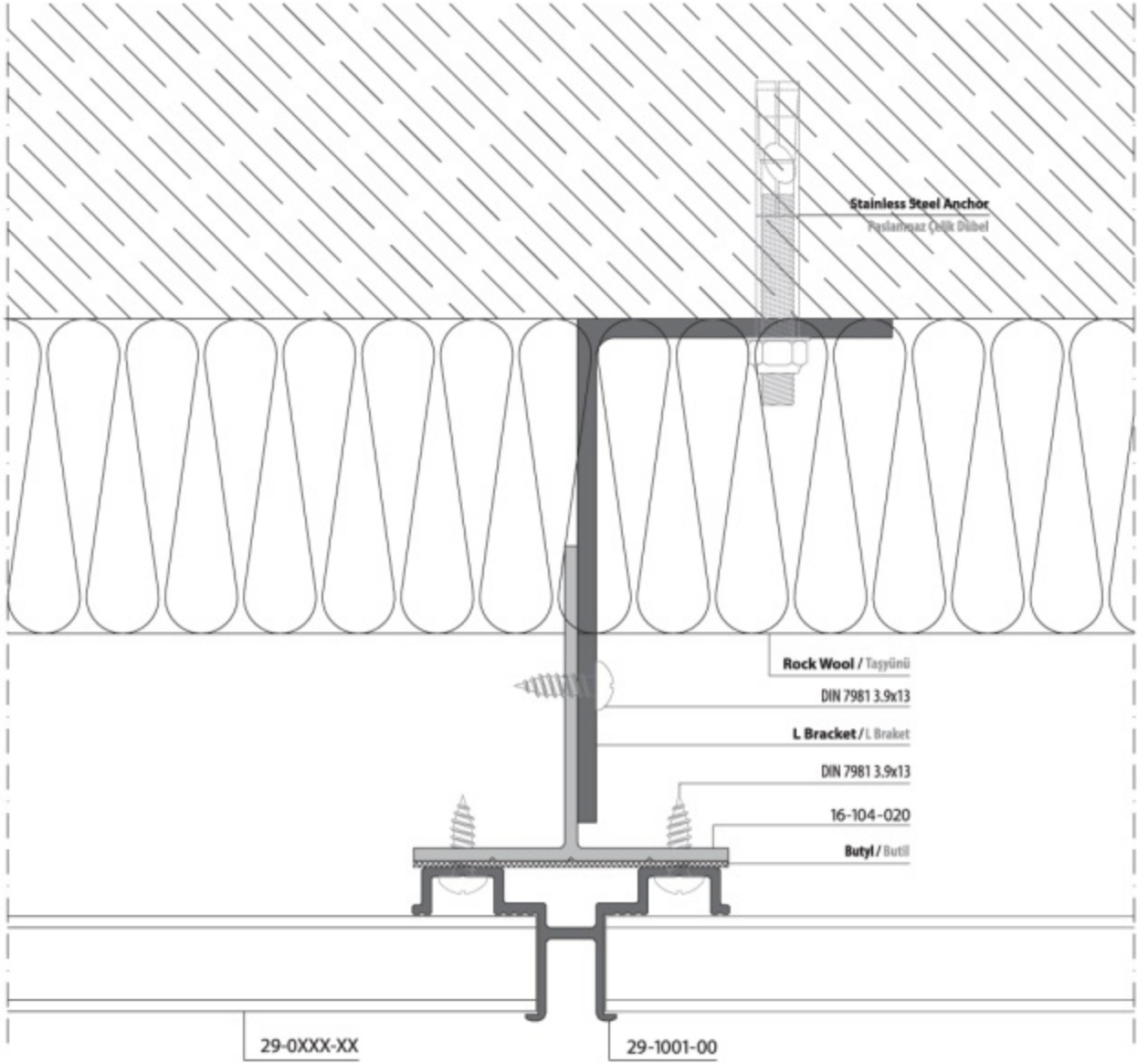


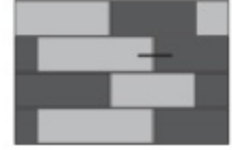
265 Lamella / Lamel



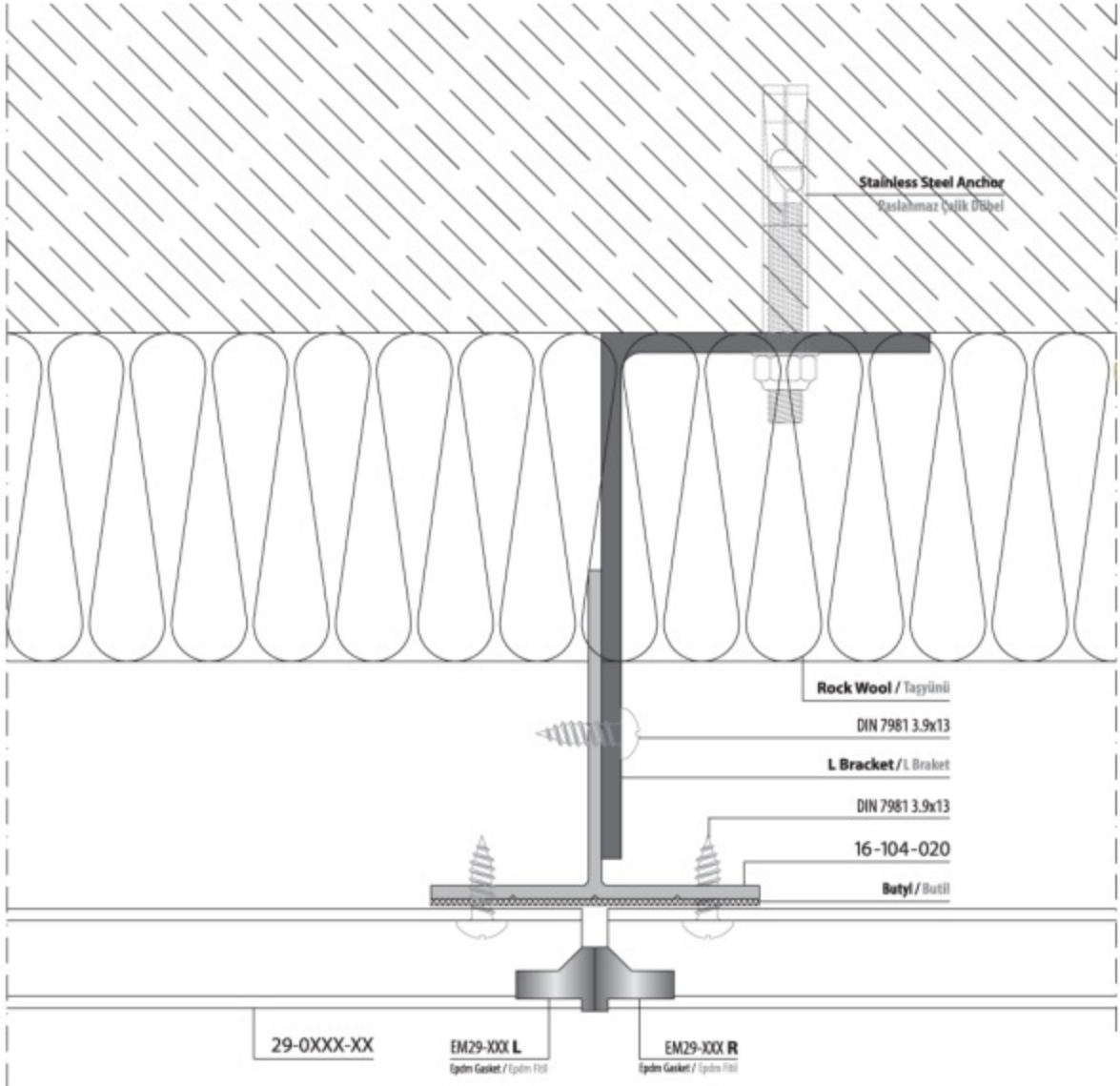


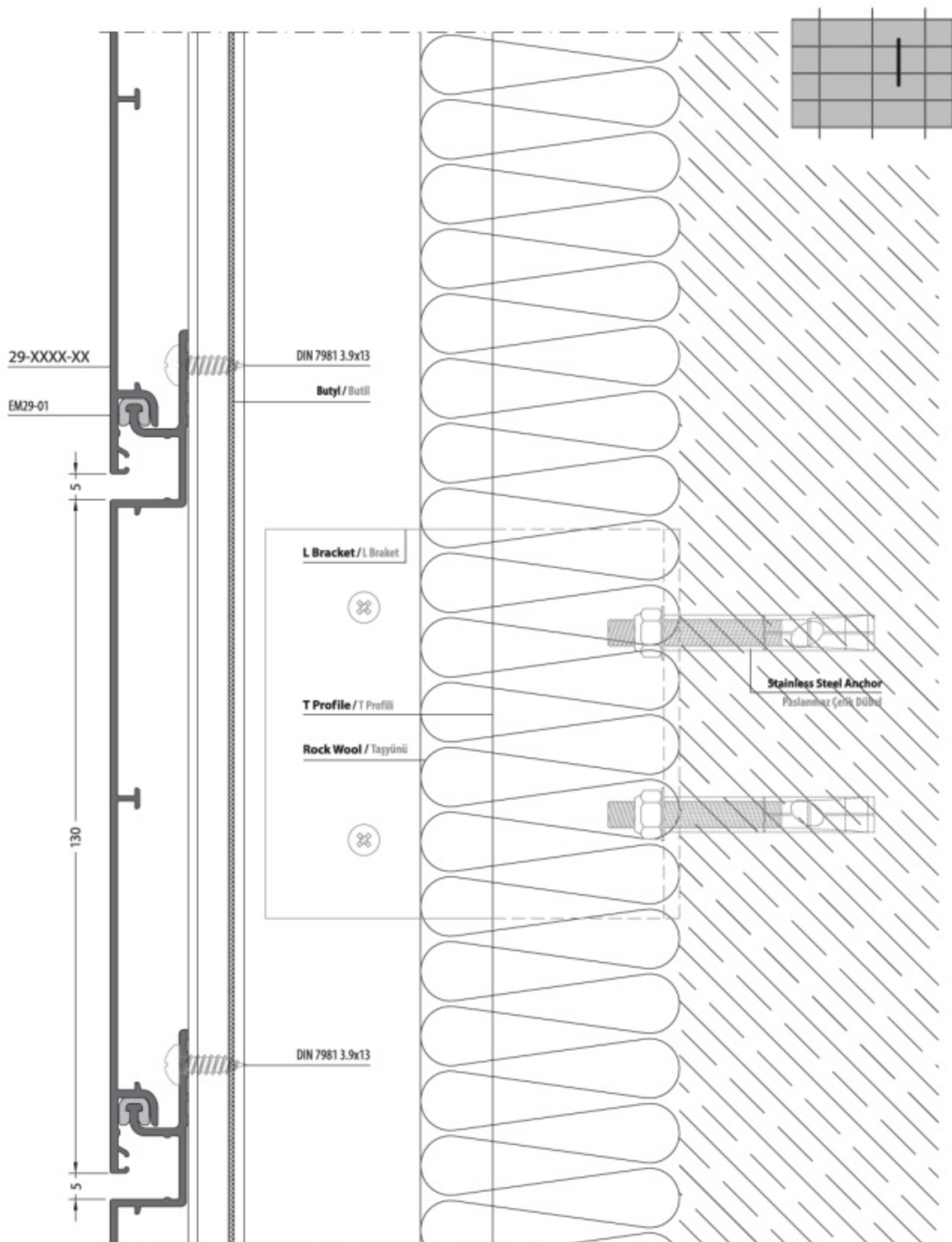
STANDARD APPLICATION / STANDART UYGULAMA

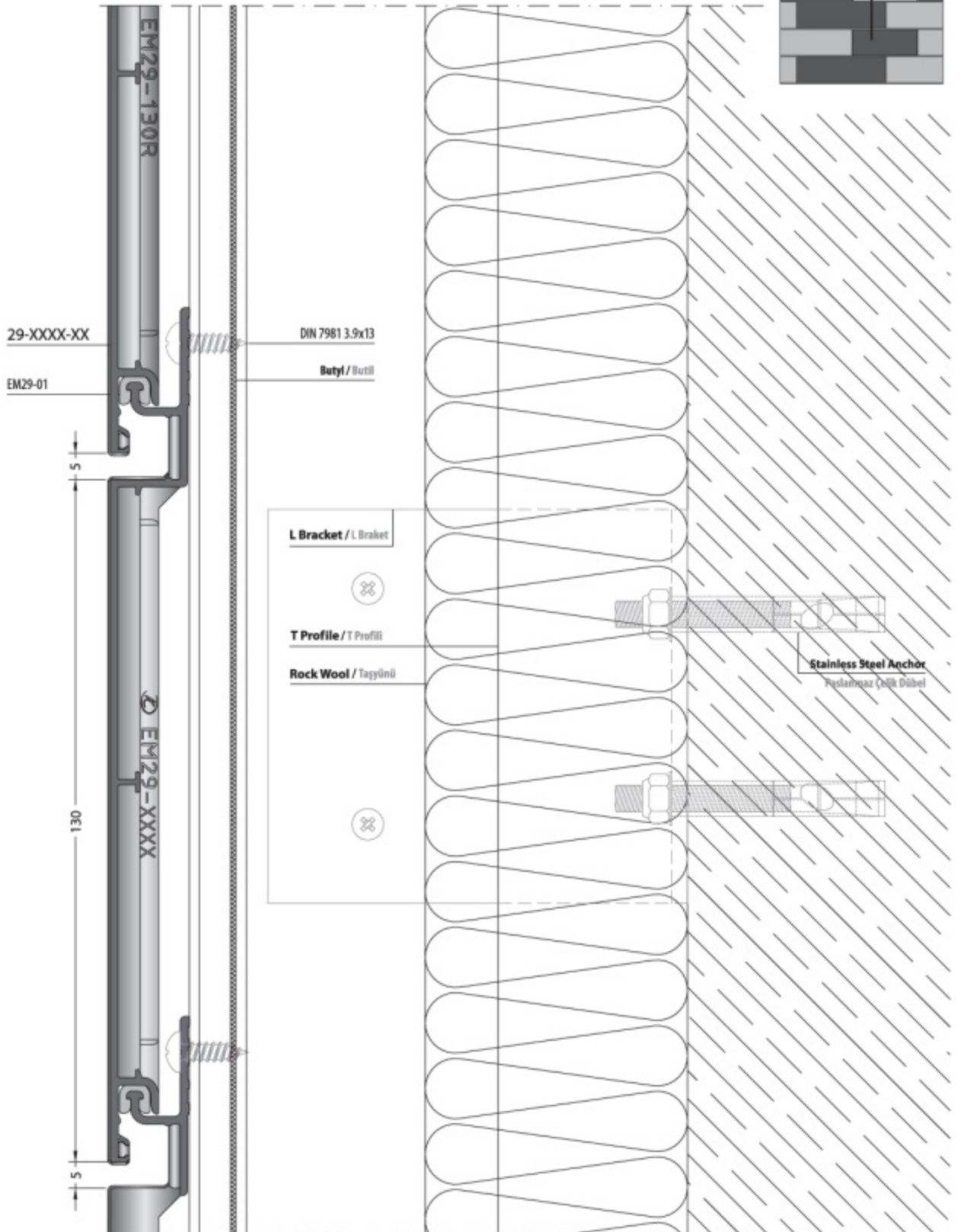




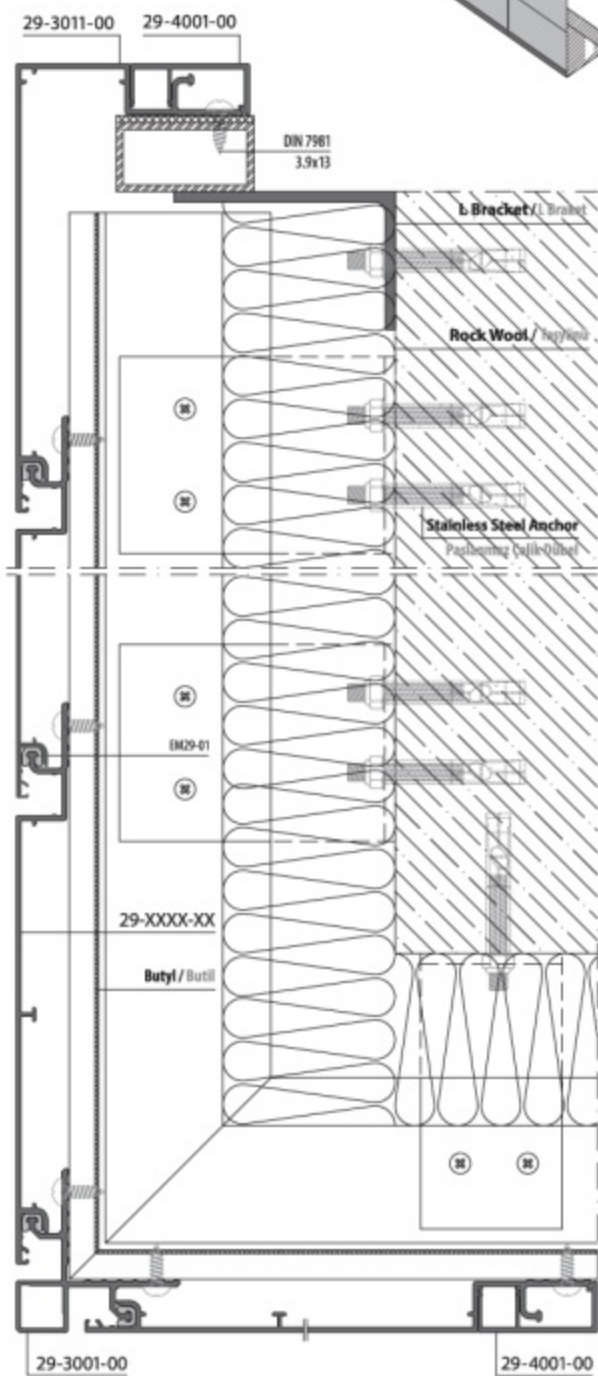
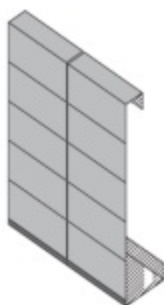
UNIQUE APPLICATION / ÖZGÜN UYGULAMA



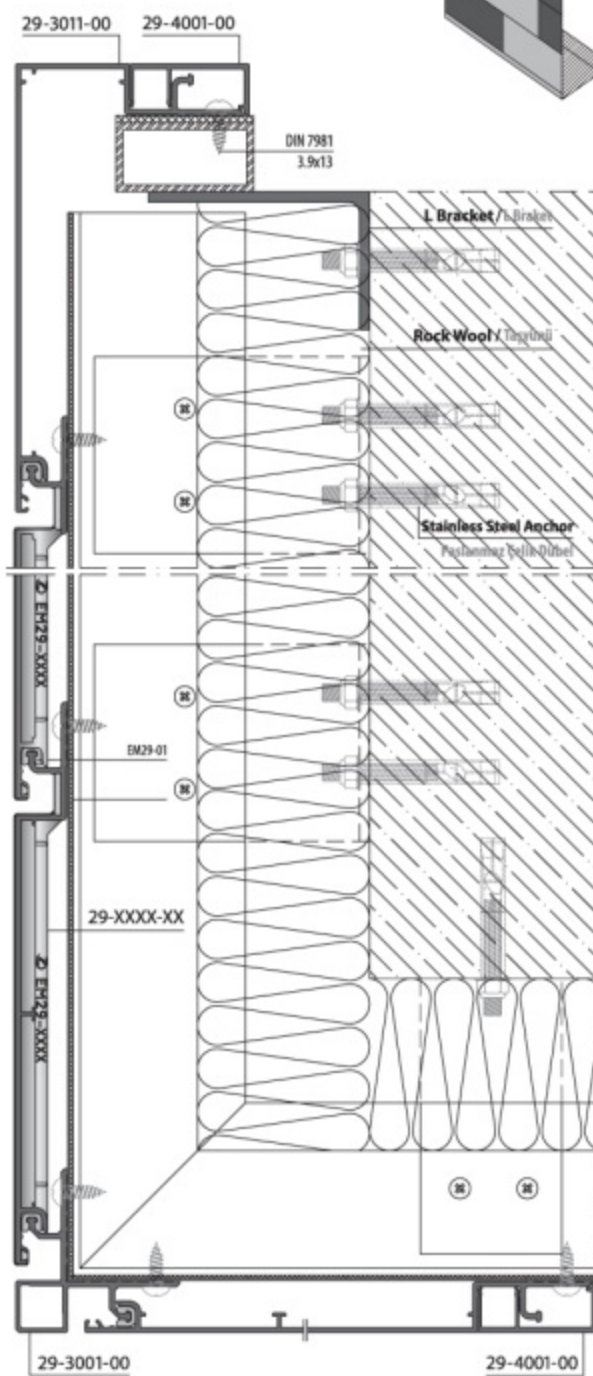
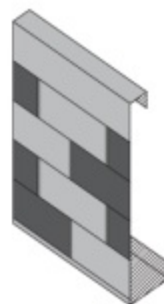




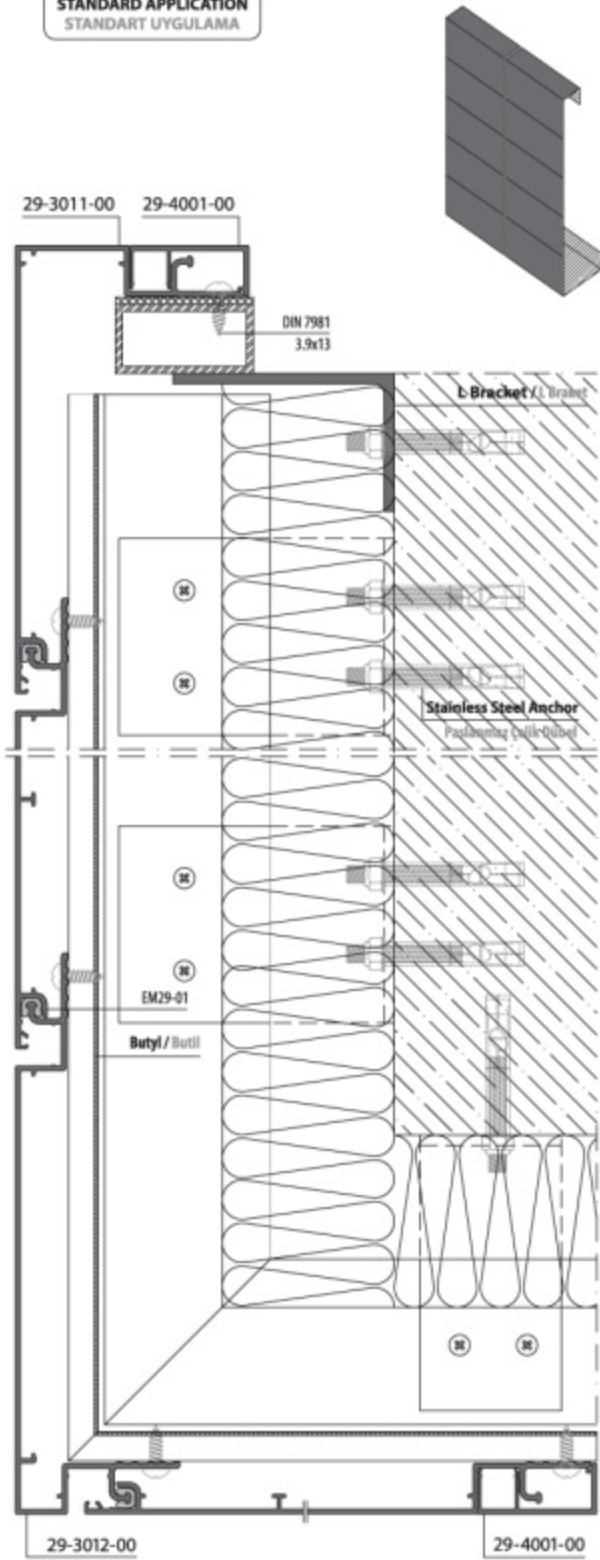
STANDARD APPLICATION
STANDART UYGULAMA



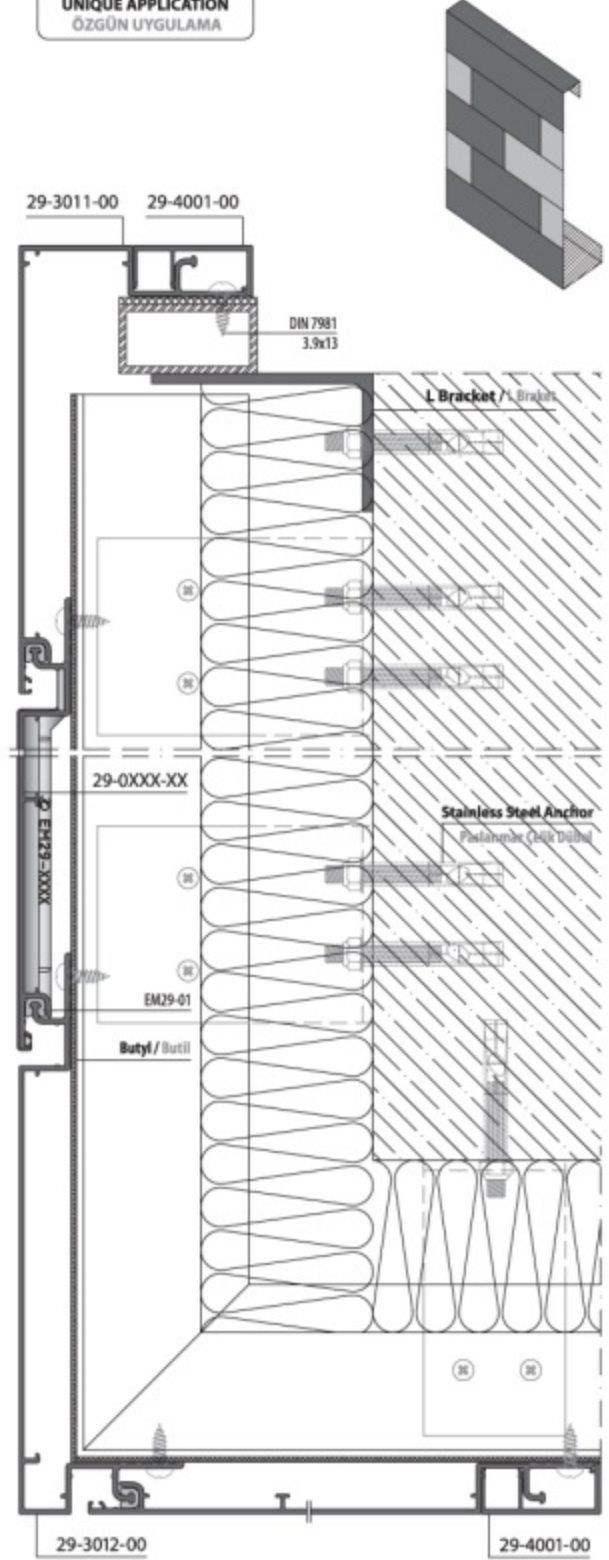
UNIQUE APPLICATION
ÖZGÜN UYGULAMA



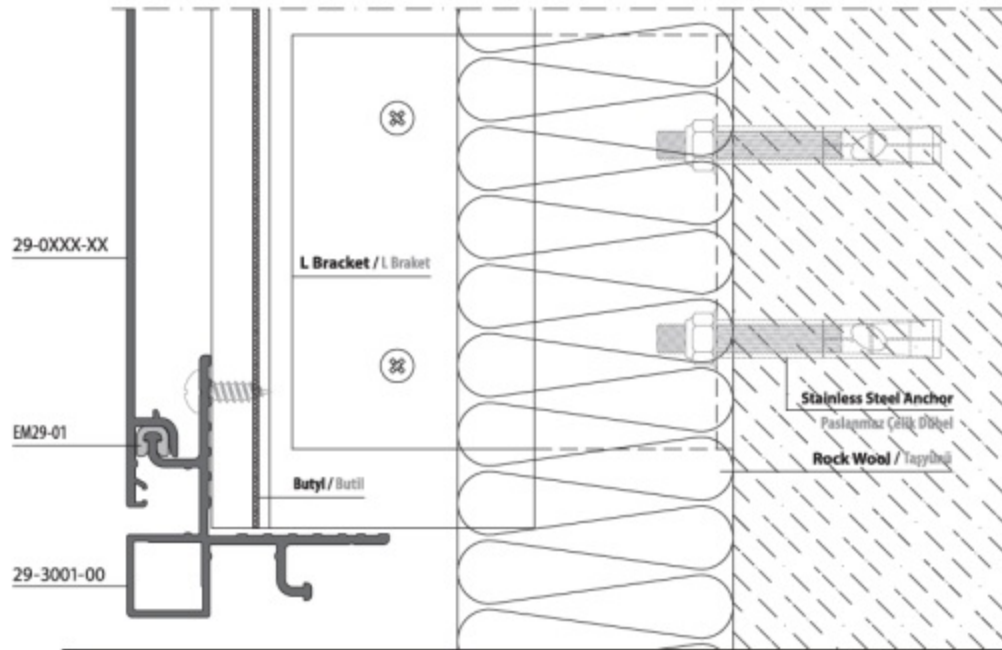
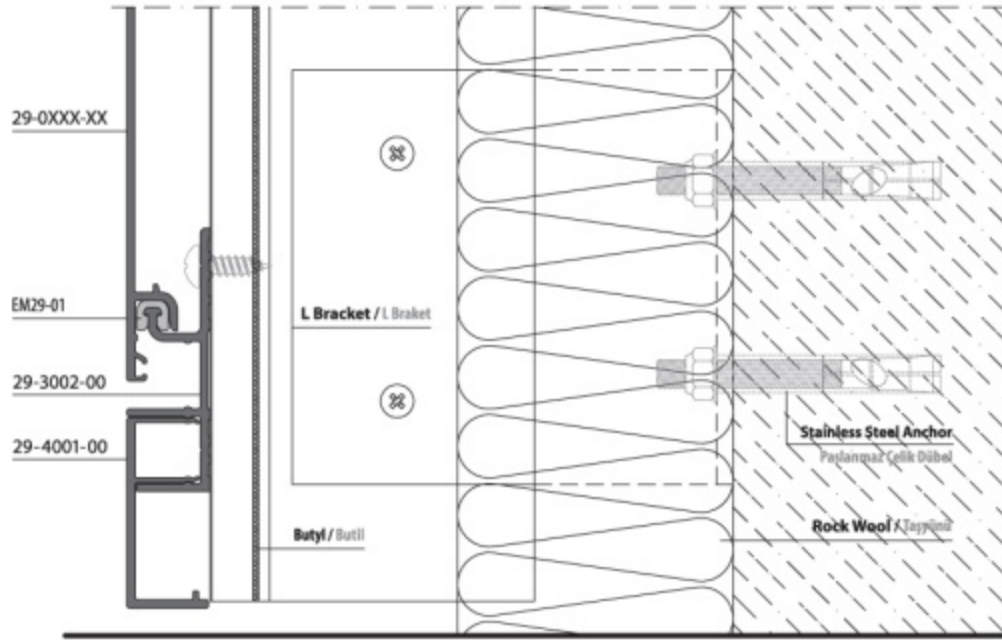
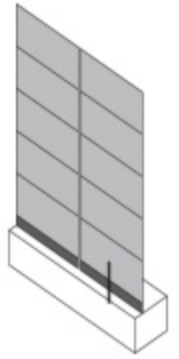
STANDARD APPLICATION
STANDART UYGULAMA



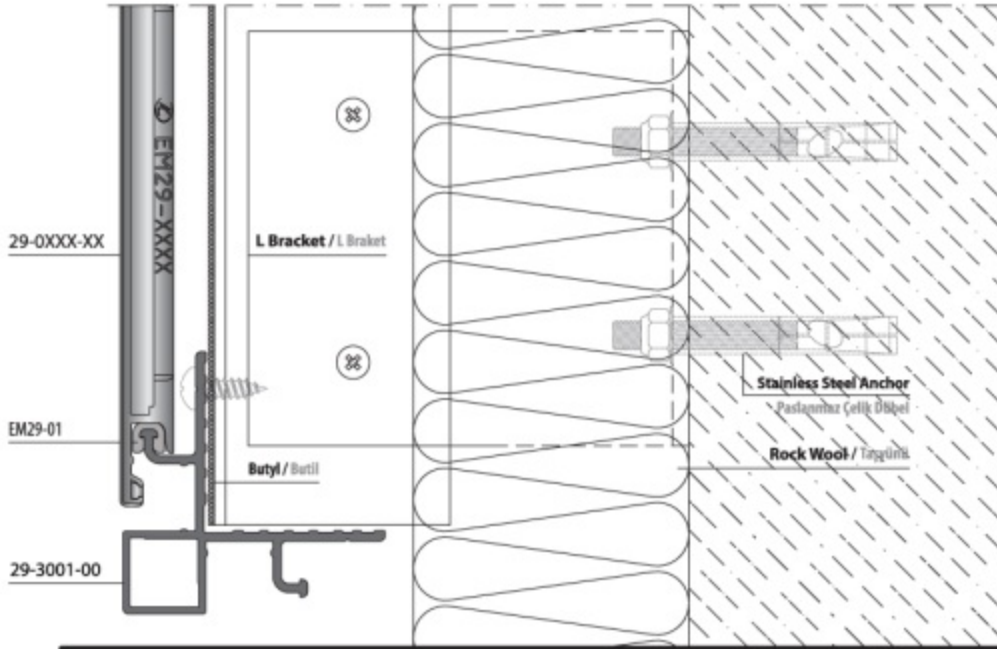
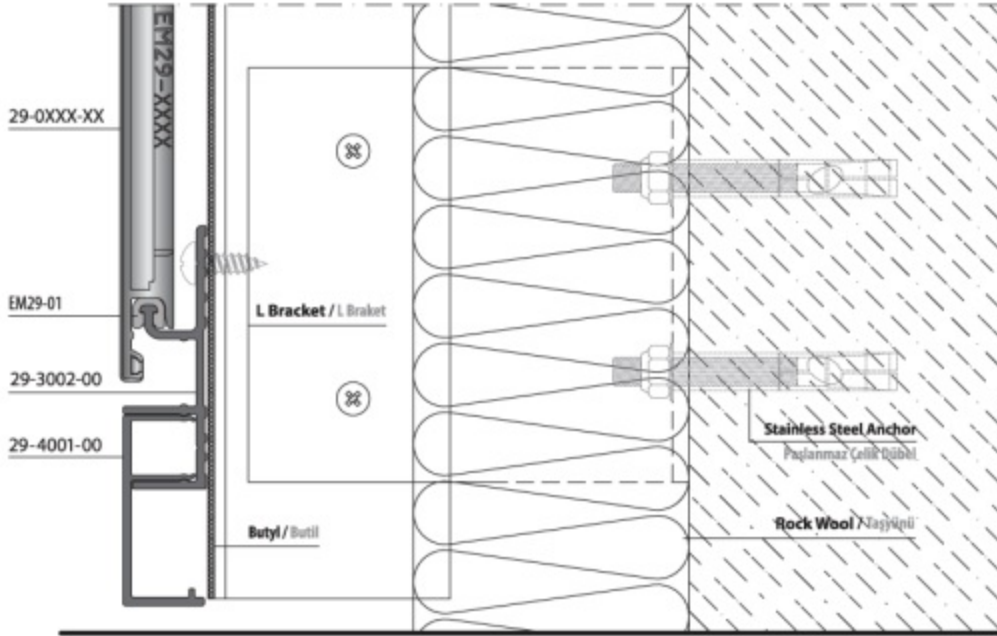
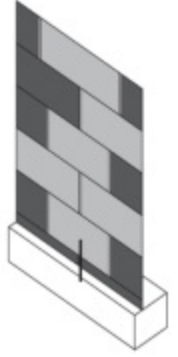
UNIQUE APPLICATION
ÖZGÜN UYGULAMA

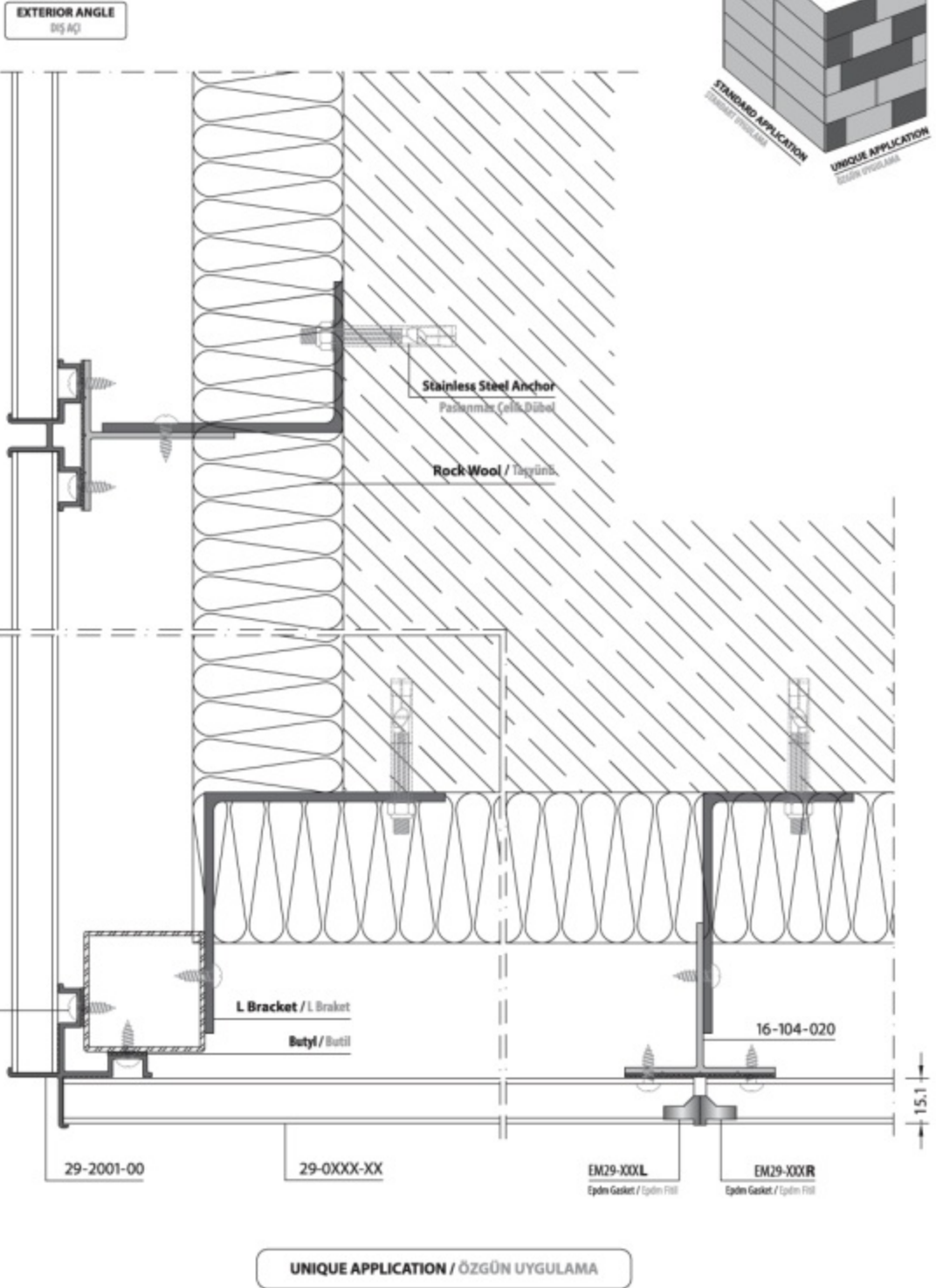


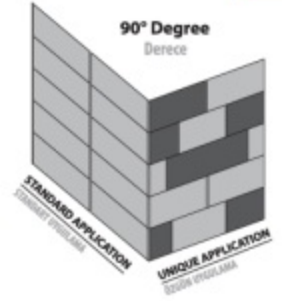
STANDARD APPLICATION / STANDART UYGULAMA



UNIQUE APPLICATION / ÖZGÜN UYGULAMA

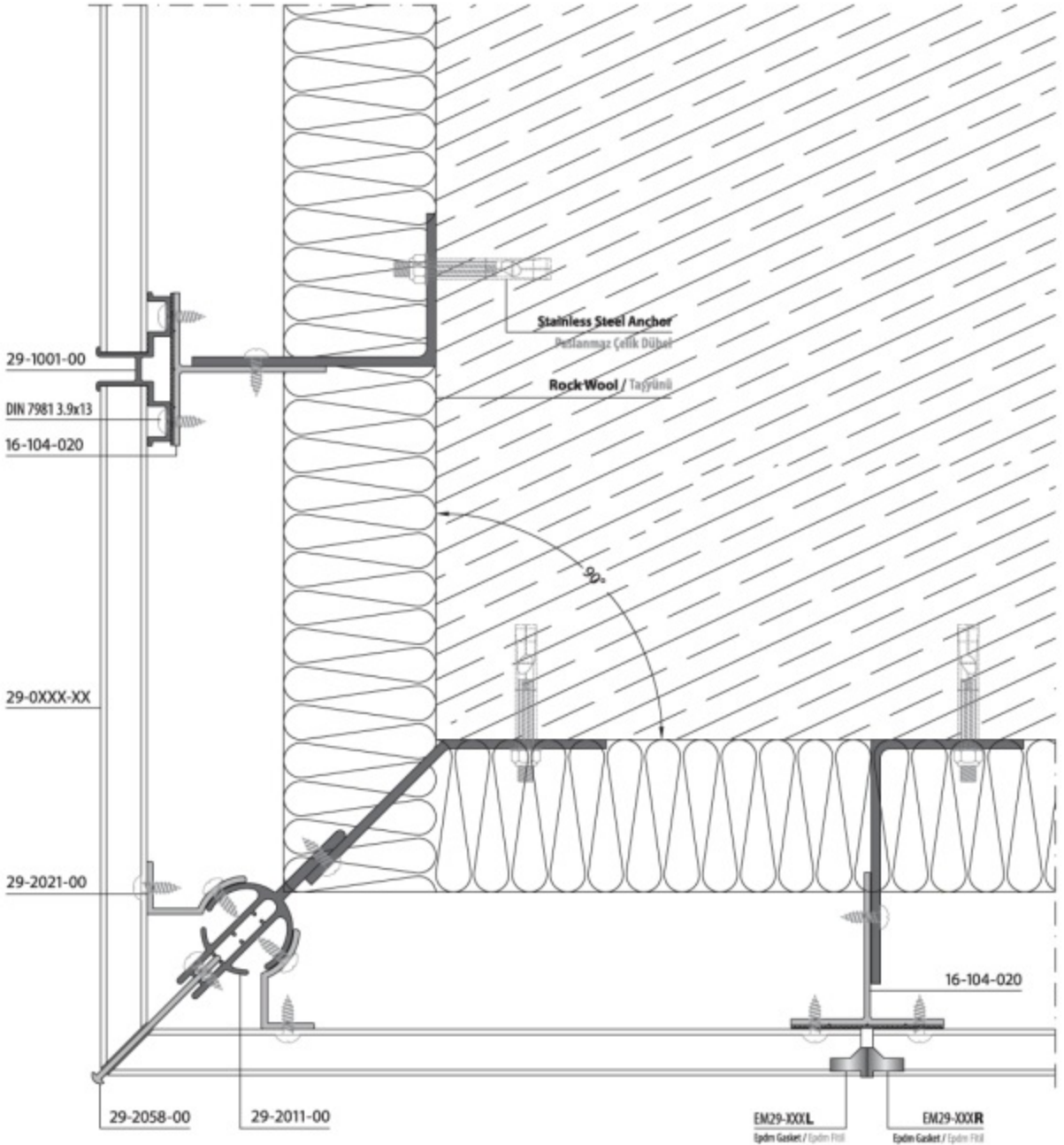




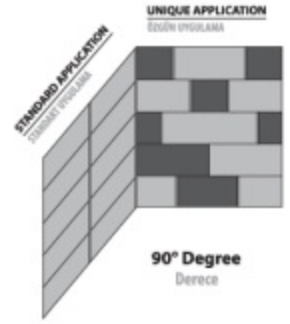


EXTERIOR ANGLE
DİŞ AÇI

STANDARD APPLICATION / STANDART UYGULAMA

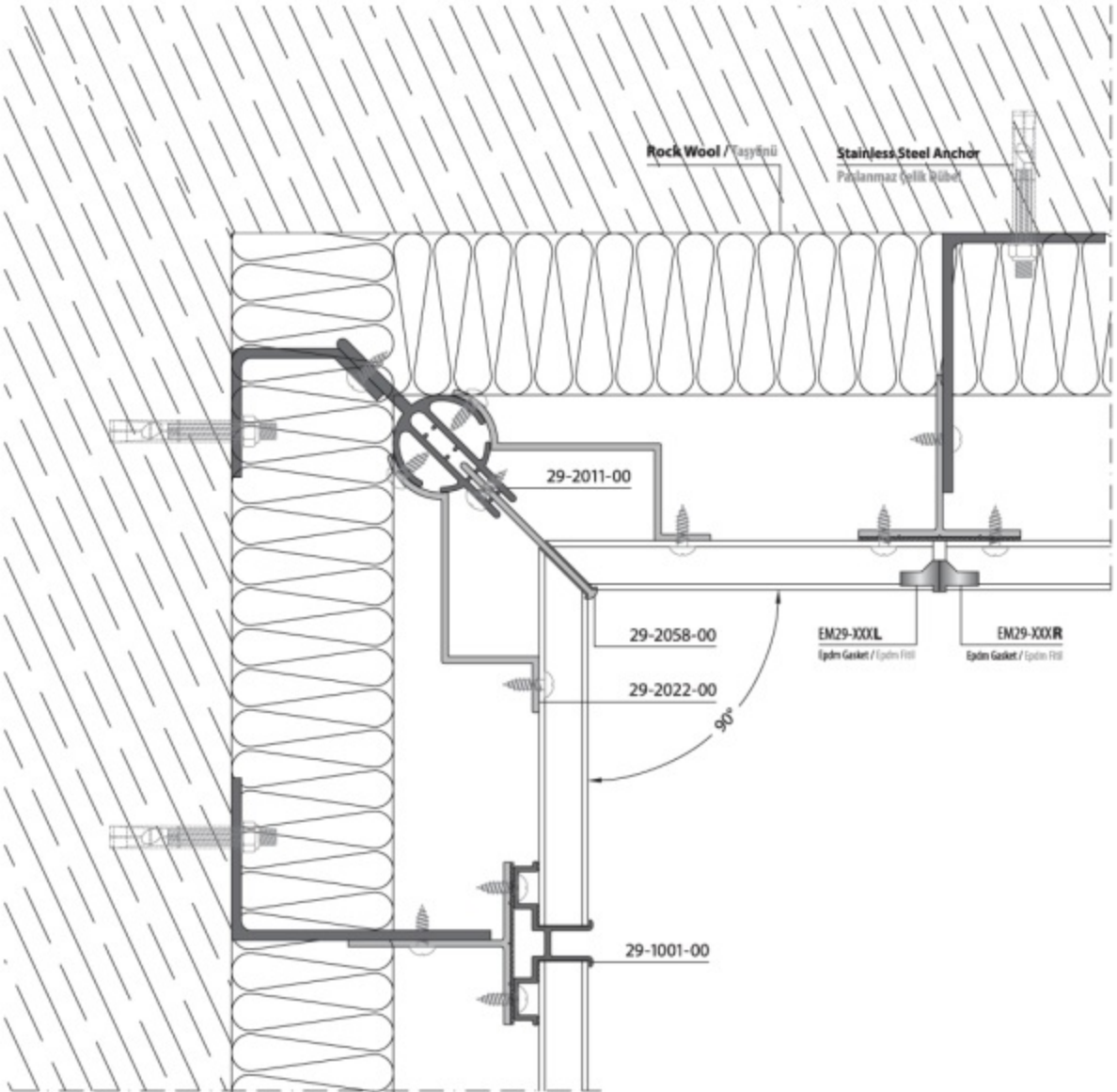


UNIQUE APPLICATION / ÖZGÜN UYGULAMA

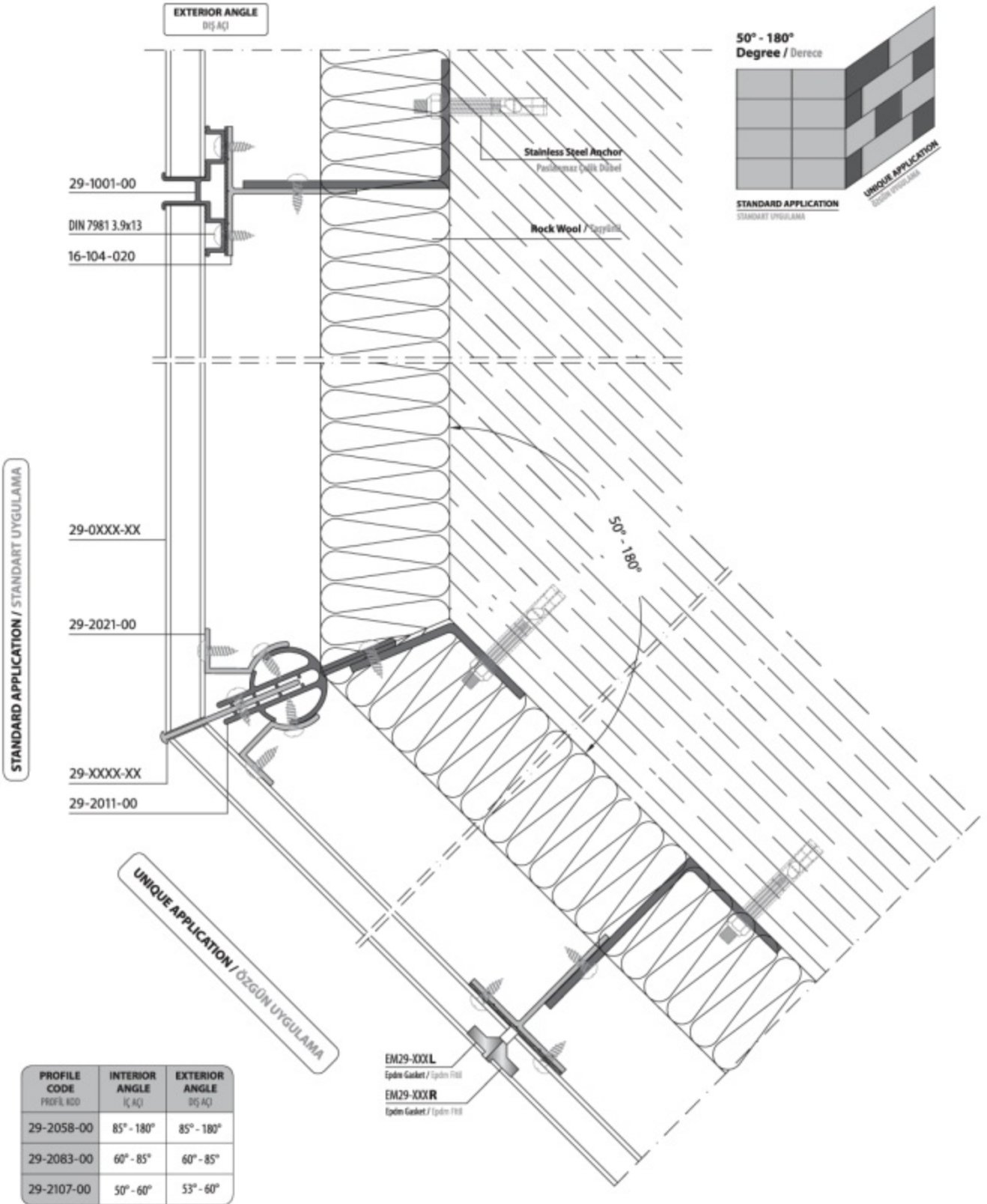


EXTERIOR ANGLE
DİŞ AÇI

STANDARD APPLICATION / STANDART UYGULAMA



UNIQUE APPLICATION / ÖZGÜN UYGULAMA



INTERIOR ANGLE
İÇ AÇI

16-104-020

DIN 7981
3.9x13

29-1001-00

29-0XXX-XX

29-2022-00

29-XXXX-XX

29-2011-00

53° - 180°

EM29-XXXL

Epdm Gasket / Epdm Filtre

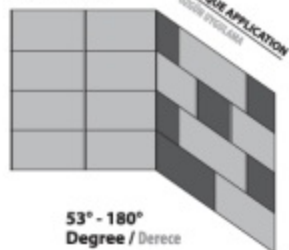
EM29-XXXR

Epdm Gasket / Epdm Filtre

Stainless Steel Anchor
Paslanmaz Çelik Döbel

Rock Wool / İzyol

STANDARD APPLICATION
STANDART UYGULAMA



53° - 180°
Degree / Derece

STANDARD APPLICATION / STANDART UYGULAMA

UNIQUE APPLICATION / ÖZGÜN UYGULAMA

PROFILE CODE PROFİL KODU	INTERIOR ANGLE İÇ AÇI	EXTERIOR ANGLE DİŞ AÇI
29-2058-00	85° - 180°	85° - 180°
29-2083-00	60° - 85°	60° - 85°
29-2107-00	50° - 60°	53° - 60°